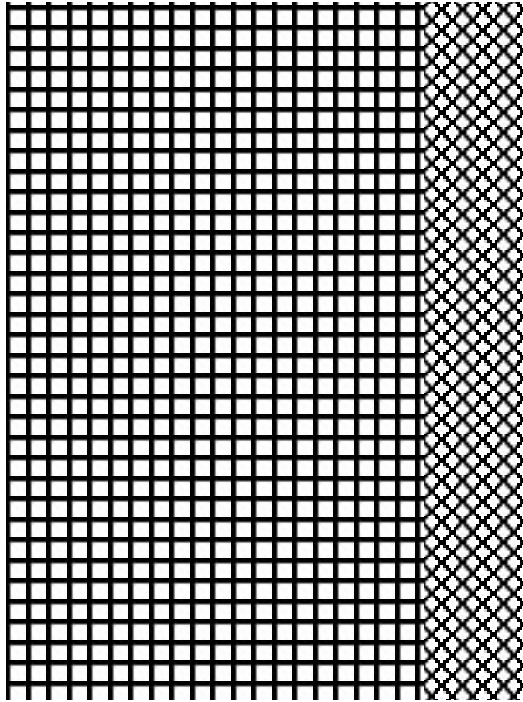


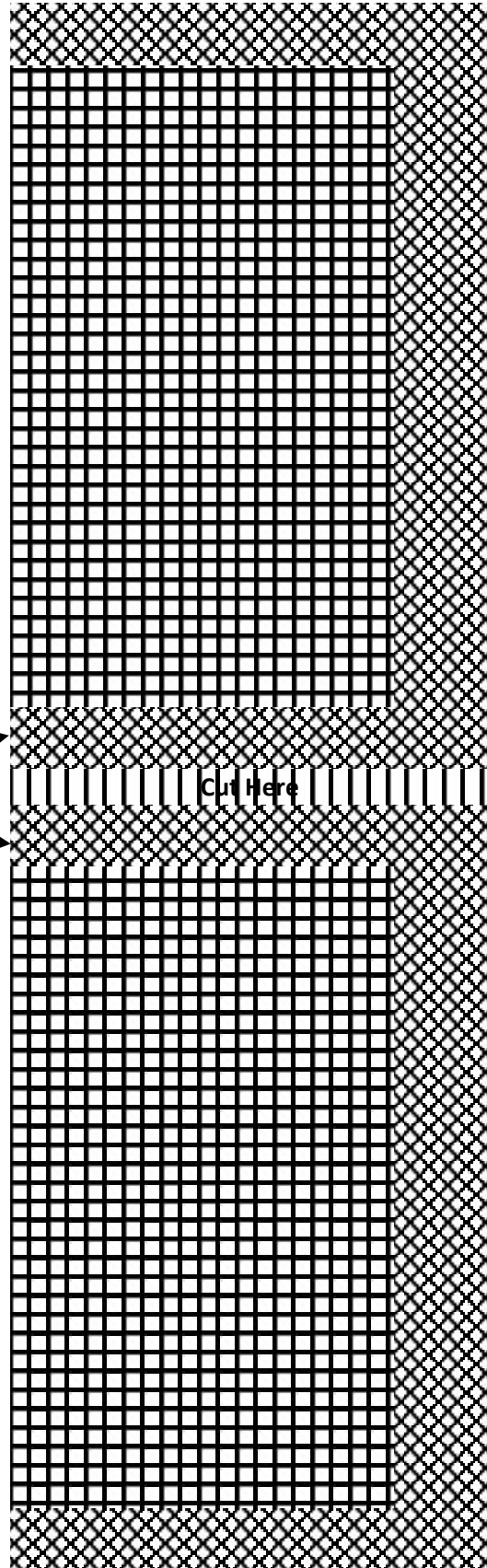
Single width of cloth on the loom

Main sett
Selvedge pattern

Joining selvedge



Twice the length is woven with the selvedge pattern woven in 4 places



Selvedge pattern woven twice in the centre portion of the weft plus an unwoven section which is where the cloth is subsequently cut

Cut Here

The two sections are aligned and joined at the joining selvage to give a double plaid with a 'total border'

